

Clarke®

WOODWORKER



DUST EXTRACTOR

MODEL NO: CDE7B

PART NO: 6470305

OPERATING & MAINTENANCE INSTRUCTIONS



ORIGINAL INSTRUCTIONS

GC0321 - REV 4

INTRODUCTION

Thank you for purchasing this CLARKE Dust Extractor which is intended to keep work areas free from dust particles & wood shavings etc.

Please read this manual thoroughly and follow the instructions carefully. Before attempting to use the product, thoroughly familiarise yourself with the product & its operation. In doing so you will ensure the safety of yourself and that of others around you and you can look forward to the product giving you long and satisfactory service.

GUARANTEE

This product is guaranteed against faulty manufacture for a period of 12 months from the date of purchase. Please keep your receipt which will be required as proof of purchase. This guarantee is invalid if the product is found to have been abused or tampered with in any way, or not used for the purpose for which it was intended.

Faulty goods should be returned to their place of purchase, no product can be returned to us without prior permission. This guarantee does not effect your statutory rights.

PRODUCT SPECIFICATIONS

Model Number	CDE7B
Dimensions (Length x Width x Height)	710 x 510 x 1520 mm
Weight	27 kg
Bag Capacity	114 Litres
Dust bag filtration	5 micron
Motor Power	1 HP
Motor Speed	2970 rpm
Power Supply	230V @ 50Hz 1ph
Inlet dia	100 mm
Noise Level	52-65 dB(A)
Operating temperature	-10 - 40 deg C

GENERAL SAFETY PRECAUTIONS

WORK AREA AND PERSONAL SAFETY

1. Avoid operating in the presence of flammable liquids or gases. The motor may produce sparks during operation. Do not use in enclosed areas where flammable, explosive or toxic vapours are given off.
2. Always stay alert, watch what you are doing and use common sense when operating the dust extractor. Do not use while you are tired or under the influence of medication, drugs or alcohol. Lack of attention can result in personal injury.
3. Never over-reach. Keep your proper footing and balance at all times to enable better control of the dust extractor in unexpected situations.
4. Never use a power product if any part is damaged. Have it inspected and repaired by your Clarke dealer. Do not use if the electric cable, plug, or the machine itself, is in poor condition.
5. Do not insert fingers or other objects into the inlet opening.
6. Always wear eye protection when using the dust collector.

GENERAL PRODUCT USE AND CARE

1. Always maintain the dust extractor with care and keep it clean for best/safest performance.
2. Never abuse the power cable. Never pull on the cable when removing the plug from the socket or lift the extractor by the power cable. Take care not to close doors on the cable or allow it to become snagged under objects with sharp edges. Keep away from heat or oil.
3. Only use extension leads that are of an appropriate power rating and suitable for the work environment. Extension leads must have an earth connection. Inspect the extension lead regularly and replace if damaged.
4. Never abuse the dust extractor by standing on it.
5. Always store the dust extractor out of reach of children.

DUST EXTRACTOR SAFETY INSTRUCTIONS

1. This dust extractor is for indoor use only.
2. This dust extractor is for collecting wood chips, shavings and dust particles only. Do not use with hazardous substances i.e. MDF dust.

3. Always ensure that the dust extractor is properly positioned where necessary to prevent it from moving during use and that the immediate area is kept clear.
4. Always use a face or dust mask if operation is particularly dusty including when disposing of the contents.
5. Always disconnect the dust extractor from the power supply before servicing or removing & emptying the filter bag etc.
6. Never leave the dust extractor running unattended. Turn power off and wait for the machine to stop before leaving.
7. Do not use in enclosed areas where flammable, explosive or toxic vapours are given off, by oil based paints, paint thinner, petrol etc.
8. Never pick up flammable or readily combustible material, including burning cigarettes or other smoking substances.
9. Never attempt to pick up liquids with this vacuum collector.
10. Always use in an upright position.
11. Always take care when a long hose is required in the work area as it presents a trip hazard. Tidy the hose away when the job is finished.
12. Do not use without the inlet hose attached and ensure the cover is securely in place when in operation.
13. Only use parts and accessories recommended in this manual. The use of unauthorised accessories or attachments is not permitted and may result in personal injury or damage to the dust extractor.
14. Do not attempt to repair or modify the dust extractor or attempt any electrical repair yourself. Consult a qualified electrician or the Clarke Service Department on 020 8988 7400.

ELECTRICAL CONNECTIONS



WARNING! READ THESE ELECTRICAL SAFETY INSTRUCTIONS THOROUGHLY BEFORE CONNECTING THE PRODUCT TO THE MAINS SUPPLY.

Before switching the product on, make sure that the voltage of your electricity supply is the same as that indicated on the rating plate. This product is designed to operate on 230VAC 50Hz. Connecting it to any other power source may cause damage.


This product may be fitted with a non-rewireable plug. If it is necessary to change the fuse in the plug, the fuse cover must be refitted. If the fuse cover becomes lost or damaged, the plug must not be used until a suitable replacement is obtained.

If the plug has to be changed because it is not suitable for your socket, or due to damage, it should be cut off and a replacement fitted, following the wiring instructions shown below. The old plug must be disposed of safely, as insertion into a mains socket could cause an electrical hazard.

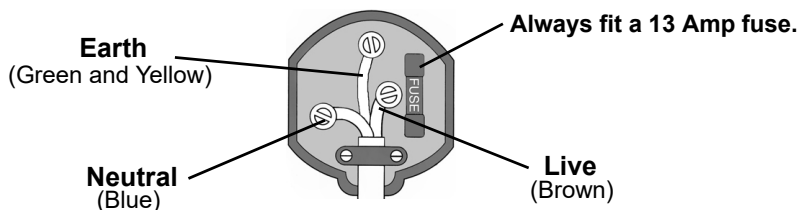


WARNING! THE WIRES IN THE POWER CABLE OF THIS PRODUCT ARE COLOURED IN ACCORDANCE WITH THE FOLLOWING CODE: BLUE = NEUTRAL BROWN = LIVE YELLOW AND GREEN = EARTH

If the colours of the wires in the power cable of this product do not correspond with the markings on the terminals of your plug, proceed as follows.

- The **Blue** wire must be connected to the terminal marked **N** or **coloured black**.
- The **Brown** wire must be connected to the terminal marked **L** or coloured red
- The **Yellow and Green** wire must be connected to the terminal marked **E** or  or coloured **Green**.

Plug must be BS1363/A approved.



Ensure that the outer sheath of the cable is firmly held by the clamp

We strongly recommend that this machine is connected to the mains supply via a Residual Current Device (RCD). If in any doubt, consult a qualified electrician. DO NOT attempt any repairs yourself.

UNPACKING & ASSEMBLY

When unpacking please check contents and advise your dealer immediately if any parts are missing. The component parts of the machine are as follows. The numbers in brackets refer to the parts diagram on page 15.

INVENTORY

- 1 x Collector Support (35)
- 1 x Collector Body & Motor (11 & 18)
- 1 x Collector (23)
- 1 x Base Plate (4)
- 4 x Castors (1)
- 1 x Cloth Filter Bag (25)
- 1 x Cloth Dust Bag (24)
- 1 x Gasket (22)
- 2 x Bag Support Rods (31)
- 1 x Adaptor (37)
- 1 x Fittings Kit

TOOLS REQUIRED

- Phillips screwdriver
- Flat-bladed screwdriver
- 8mm spanner
- 10mm spanner
- 13mm spanner

ASSEMBLY

To assemble your Dust Collector proceed as follows:

1. Lay components out neatly.
2. Place the base plate (4), upside down and fit the four castors (1), using screws, washers and nuts supplied. Fit all screws etc finger tight only at first. Once all screws are in place, proceed to tighten them using a screwdriver and spanner. (DO NOT OVERTIGHTEN).



3. Attach column and motor plate, (20) to the base plate using bolts and washers supplied, (DO NOT OVERTIGHTEN). When viewed from the back, ensure threaded holes in side of the motor plate are on the right hand side, (see Fig 1).

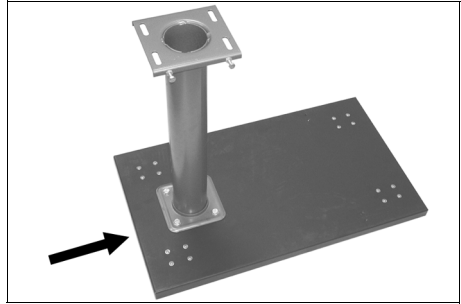


FIG 1

NOTE:

Before installing the motor and collector body, (11 & 18) ensure the two hex head screws and lock-nuts are fitted to motor plate, (see Fig 2), It is important that the bolt heads do not protrude more than 20mm at this stage, leaving them loose for adjustment later.

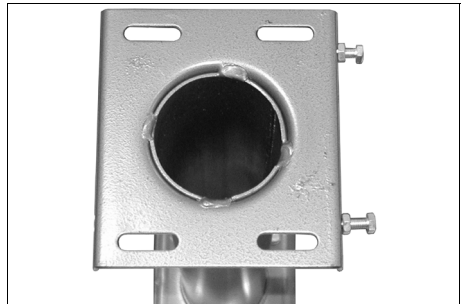
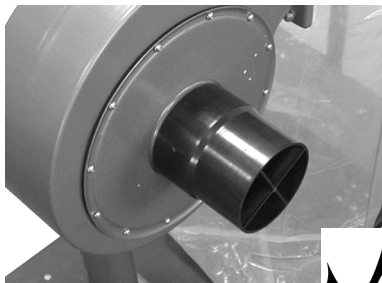
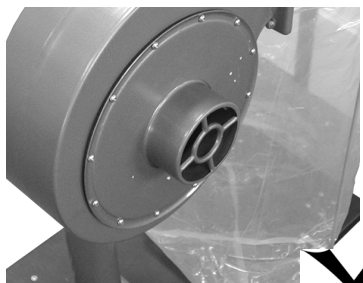


FIG 2

4. Attach the motor and collector body, (11 & 18) to the motor plate (see Fig 3), using nuts, bolts and washers supplied, Centralise the motor in both directions before lightly tightening the nuts and bolts. Adjust the bolts, ref Fig. 2 so that the heads butt up to the collector body, tighten the locknuts.
5. Fit the hose adapter, (37) onto the inlet cover using the screws supplied, (see Fig 3a). This is a safety requirement and must be adhered to, as this part also prevents finger access into the impeller.



FIG 3



6. Attach the collector, (23) to the collector body as shown in Fig 4, using 6 hex head screws and washers, (supplied), (DO NOT OVERTIGHTEN). Ensure the gasket, (22) is fitted between the two units.



FIG 4

7. Attach the two bag support rods, (31) using screws, nuts and washers supplied, one on either side of the collector, (see Fig 5). It may be necessary to reposition the motor to align the rods vertically etc. Once the rods are in place and secured, retighten the nuts and bolts securing the motor to the motor plate.



FIG 5

8. Attach the collector support, (35) using the screws and washers supplied, (see Fig 6).
9. Secure the other extractor must remain upright.



OPERATION

DO NOT OPERATE WITHOUT ALL PARTS IN PLACE

Do not attempt to clean, remove/attach dust bags or carry out any servicing to the unit whilst it is in operation. ALWAYS ensure it is switched off and isolated from the mains by removing the plug from the socket.



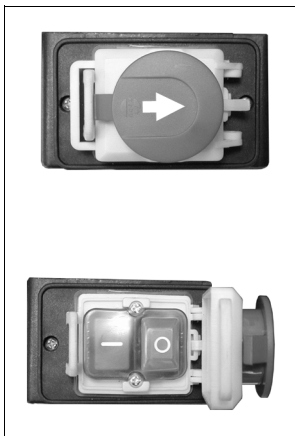
CAUTION: THE BLOWER HOUSING CONTAINS A HIGH SPEED FAN BLADE THAT COULD AMPUTATE FINGERS, GRAB LOOSE CLOTHING AND NECK TIES ETC, AND PROPEL DUST AT VERY HIGH VELOCITIES

A suitable length of flexible hose can be fitted to the collector inlet using the adapter supplied, (item No 37 in the parts list on page 15). The collector can also be connected directly to the woodworking machine being used, using the appropriate hose and adapters which can be purchased separately from your nearest Clarke dealer.

To switch ON, press the switch cover (see fig. 8) down and slide in direction of arrow and lift up, this will expose the ON/OFF buttons, (see fig 9) Push the ON button, (green button 'I'). DO NOT close the cover as this will switch the machine OFF again.

Take care never to suck in foreign objects such as screws, nails, large pieces of plastic or wood.

NOTE: In case of emergency, close the switch cover quickly, cover will latch down and motor will be switched OFF. To switch OFF normally, press OFF button, (red button 'O'), always close cover to prevent accidental starting.



MAINTENANCE

Always inspect the machine before use and ensure it is in top condition.

Regularly inspect the filter for damage before use and replace if necessary. Regularly check the tightness of the filter, filter bag and locking ring.

Excessive dust in the motor can cause overheating. Ensure all air vents are clear. To avoid eye injury or adverse reaction to dust, clean the machine by cleaning out the air vents using a vacuum cleaner.

Check the power cable to ensure it is sound and free from cracks, bare wires etc. avoid using solvents when cleaning plastic parts. Most plastics are susceptible to damage from various types of commercial solvents.

All bearings etc, in this machine are lubricated with a sufficient amount of high grade lubricant for the machine's lifetime under normal operating conditions, therefore no further lubrication is required.

Occasionally it may be necessary to manually clean the impeller, to do this proceed as follows.

1. Switch OFF and unplug the machine from the electrical supply.
2. Remove 12 screws securing the inlet cover, (6), and remove cover to expose the impeller.
3. Clean impeller using a brush, cleaning cloth and vacuum cleaner

CAUTION: Beware of sharp edges.

If any repairs (other than the above cleaning) become necessary, it should be carried out by an authorised service centre.

TROUBLESHOOTING

Problem	Possible cause	Suggested Remedy
Motor will not run	Defective switch, cable or motor.	Check electrical connections to all components or consult your Clarke dealer.
Excessive dust in the air	Loose retaining band or hose. Collecting bag damaged.	Tighten connections. Replace bag.
Unexpected noise from fan/motor	Loose internal components. Dust buildup inside housing.	Switch off the power. Consult your Clarke dealer.
Excessive noise	Defective motor	Have machine repaired by your Clarke dealer
Machine runs but fails to reach full speed.	Low voltage or motor defective.	Have machine repaired by your Clarke dealer
Motor fails to develop full power.	Supply circuit overloaded. Extension lead unsuitable.	Use different circuit. Replace extension lead.
Motor does not start when ON switch is pressed.	Switch contacts burnt. Start capacitor faulty.	Have switch or capacitor replaced by your Clarke dealer.

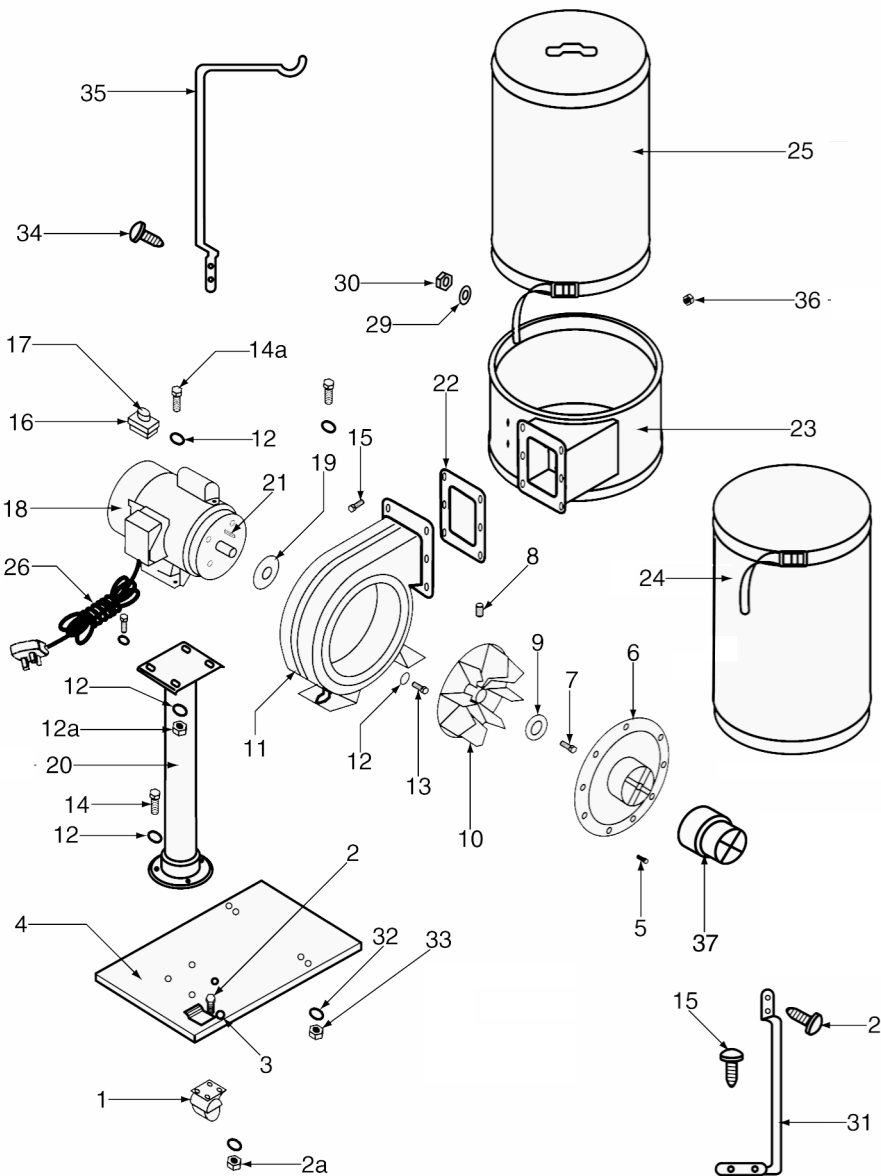
ENVIRONMENTAL RECYCLING POLICY



Through purchase of this product, the customer is taking on the obligation to deal with the WEEE in accordance with the WEEE regulations in relation to the treatment, recycling & recovery and environmentally sound disposal of the WEEE.

In effect, this means that this product must not be disposed of with general household waste. It must be disposed of according to the laws governing Waste Electrical and Electronic Equipment (WEEE) at a recognised disposal facility.

COMPONENT PARTS



COMPONENT PARTS

No	Description
1	Castor
2	Pan head screw M5x16
2a	Nut
3	Spring washer 6dia
4	Base plate
5	Pan head screw M5x10
6	Inlet cover
7	Socket head screw M6x20
8	Set screw M8x10
9	Washer
10	Fan
11	Collector body
12	Washer 8 dia
12a	Nut M8
13	Hex head screw
14	Hex head screw
14a	Hex head screw
15	Hex head screw
16	Switch
17	Key switch

No	Description
18	Motor
19	Gasket
20	Column & motor plate
21	Key 5x5x30
22	Packing
23	Collector
24	Collection bag
25	Filter bag
26	Power cable
27	n/a
28	n/a
29	Spring washer
30	Nut
31	Bracket
32	Washer
33	Nut
34	Screw
35	Pole
36	Nut
37	Adaptor

ACCESSORIES

The Clarke Dust Extractor Kit, model: 'CDE Kit', Part No: 6470312 can be used with the CDE7B. It consists of:

- Hose 2.5metres (94") Long X 102mm (4") ID
- Adapter/ 2" Reducer

Both items fit directly onto the safety adapter already fitted to the dust extractor inlet cover. NEVER remove this adapter, as this is a safety requirement.

DECLARATION OF CONFORMITY-UK

**UK
CA**

Clarke[®]
INTERNATIONAL

Hemncoll Street, Epping, Essex CM16 4LG

DECLARATION OF CONFORMITY

This is an important document and should be retained.

We hereby declare that this product(s) complies with the following UK legislation:

Electromagnetic Compatibility Regulations 2016.

Supply of Machinery (Safety) Regulations 2008.

*The Restriction of the Use of Certain Hazardous Substances
in Electrical and Electronic Equipment Regulations 2012.*

The following standards have been applied to the product(s):

EN 62233:2008, EN 60335-2-69:2012, EN 60335-1:2012+ A11+A13+A1+A14+A2,

EN 61000-3-2:2014, EN 61000-3-3:2013, EN 55014-2:2015, EN 55014-1:2017.

The technical documentation required to demonstrate that the product(s) meet(s) the requirement(s) of the aforementioned legislation has been compiled and is available for inspection by the relevant enforcement authorities.

This product was placed onto the market: 2002

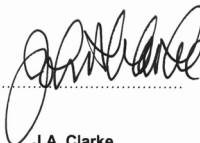
Product Description: Dust Extractor

Model number(s): CDE7B

Serial / batch Number: N/A

Date of Issue: 03/03/2021

Signed:



J.A. Clarke

Director

DECLARATION OF CONFORMITY-EU



Clarke[®]
INTERNATIONAL

Fitzwilliam Hall, Fitzwilliam Place, Dublin 2

DECLARATION OF CONFORMITY

This is an important document and should be retained.

We hereby declare that this product(s) complies with the following directive(s):

2014/30/EU *Electromagnetic Compatibility Directive.*
2006/42/EC *Machinery Directive.*
2011/65/EU *Restriction of Hazardous Substances, (amended by 2015/863).*

The following standards have been applied to the product(s):

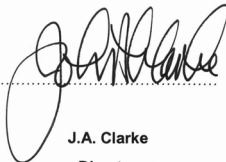
*EN 62233:2008, EN 60335-2-69:2012, EN 60335-1:2012+ A11+A13+A14+A2,
EN 61000-3-2:2014, EN 61000-3-3:2013, EN 55014-2:2015, EN 55014-1:2017.*

The technical documentation required to demonstrate that the product(s) meet(s) the requirement(s) of the aforementioned directive(s) has been compiled and is available for inspection by the relevant enforcement authorities.

The CE mark was first applied in: 2002

Product Description: Dust Extractor
Model number(s): CDE7B
Serial / batch Number: N/A
Date of Issue: 03/03/2021

Signed:



J.A. Clarke
Director

A SELECTION FROM THE VAST RANGE OF

Clarke®

QUALITY PRODUCTS



AIR COMPRESSORS

From DIY to industrial, Plus air tools, spray guns and accessories.

GENERATORS

Prime duty or emergency standby for business, home and leisure.

POWER WASHERS

Hot and cold, electric and engine driven - we have what you need

WELDERS

Mig, Arc, Tig and Spot. From DIY to auto/industrial.

METALWORKING

Drills, grinders and saws for DIY and professional use.

WOODWORKING

Saws, sanders, lathes, mortisers and dust extraction.

HYDRAULICS

Cranes, body repair kits, transmission jacks for all types of workshop use.

WATER PUMPS

Submersible, electric and engine driven for DIY, agriculture and industry.

POWER TOOLS

Angle grinders, cordless drill sets, saws and sanders.

STARTERS/CHARGERS

All sizes for car and commercial use.

PARTS & SERVICE:

0208 988 7400

Parts Enquiries

Parts@clarkeinternational.com

Servicing & Technical Enquiries

Service@clarkeinternational.com

SALES: UK 01992 565333 or Export 00 44 (0)1992 565335

Clarke INTERNATIONAL Hemnall Street, Epping, Essex CM16 4LG
www.clarkeinternational.com